

KEEPSAKES THAT TELL STORIES



Quality

Precious metals.
Detailed prints.
Beautiful products.



Connection

Connecting you to
the ones you love for
more than 18 years.



Handcrafted

Real artistry.
By real people.
Right here in the USA.

Meadow Hill[™]
CORPORATION

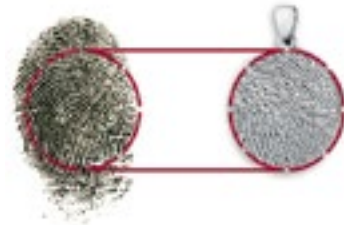
PRODUCT CATALOG

STAY CONNECTED WITH A CUSTOM KEEPSAKE

The simple touch of one of our keepsakes connects us to the people, pets, and passions we love. From a two-dimensional ink or scanned print, Meadow Hill's artisans create a three-dimensional wax mold that is then cast in precious metal using the ancient art of lost-wax casting. Polished and engraved, these one-of-a-kind keepsakes keep us coming back to the stories that connect us!

IT STARTS WITH A PRINT

When it comes to our pieces, the better the quality of the print supplied, the greater the detail in the final keepsake. Our designers select the portion of the two-dimensional print that has the most unique characteristics and a high degree of clarity. The print is then individually cast, replicating the ridges and lines of the original print to give you a truly unique, high-quality keepsake. Follow the steps below to order your keepsake!



STEP 1 SELECT YOUR KEEPSAKE

Meadow Hill offers a wide range of keepsakes. From rings, pins, and pendants to pocket knives and cuff links, there is something for everyone. Whether worn or carried in a pocket, these one-of-a-kind keepsakes help us remember those we love and make wonderful gifts to mark milestones and special occasions. Our keepsakes come in many sizes and shapes. Please refer to the specific dimensions on each product page. Chains, bracelets, and cords (see page 17) are sold separately, with the exception of our Noble Bronze™ Collection (see pages 13-14).

STEP 2 PICK YOUR PRECIOUS METAL

Meadow Hill keepsakes are available in .925 Sterling Silver and 14k White or Yellow Gold. We also offer some select styles in Noble Bronze™, our proprietary metal formula with a hypo-allergenic coating. Most Thumbies and Buddies are high polished, while Noble Bronze™ keepsakes will have a satin finish.



STEP 3 DETERMINE PRINT STYLE

Crafted from the actual print of the people and pets we hold dear, there are multiple-print styles available. You have your choice of full fingerprint (print extends edge-to-edge), rimmed print (polished rim frames print), handprint, footprint, paw or nose print, or choose to do a custom print.



STEP 4 CHOOSE YOUR BAIL

Charms come with different bail configurations, which determine how the charm is worn or carried. Our one- and two-stone bails allow you to add further personalization. (See page 17 for stones.)



STEP 5 ENTER YOUR ENGRAVING

Add a special message to your keepsake with engraving! Product size variations dictate the amount of engraving, so please refer to the engraving specs for each product. Both **BLOCK** and *Script* styles are available.



TABLE OF CONTENTS

PAGES

PENDANTS

View all pendant and charm options, which can be added to chains, cords, or bracelets.

3-6

RINGS

Choose from our selection of band, cremation, or signet rings.

7

PINS, EARRINGS & BRACELETS

Suspend your print on a pin, pair of earrings, or charm bracelet.

8

BEADS

See our full range of bead designs, which can be added to our bracelets or added to other popular charm bracelets.

9-10

ACCESSORIES & MENSWEAR

Shop the full selection of menswear accessories, as well as knives, money clips, lighters, and Lucite® keychains.

11-12

COLLECTIONS

View the Noble Bronze™ (Including KeyTags) & Phoenix Collection™.

13-16

KEEPSAKE ADD-ONS

Pick out your chain, cord, bracelet, or gemstone add-on.

17

URNS

Add a personal keepsake charm to a variety of Davis-Whitehall Urns.

18

ORDER FORM

Use enclosed order form to mail in your order with prints, or visit www.meadowhillco.com to place your order with Print Session ID.

20-21

Meadow Hill has charm sizes, shapes and metals for every style and budget. Seven styles are available in .925 Sterling Silver and solid 14k White and Yellow Gold: our oval shape in three sizes, heart shapes in single and double arrangements, as well as our Family Ties pendants. Each is available with a variety of print styles.



CLASSIC STANDARD (SMALL) CHARM
1/2" W x 5/8" L

Good things come in small packages! Simple, clean, classic. With the touch of our Standard Charm, you feel the connection to the person whose print you wear.



CLASSIC MIDI (MEDIUM) CHARM
11/16" W x 7/8" L

Smaller than a Grand but larger than a Standard, Midis are a happy medium for casting your loved one's print.



ENGRAVING

- Both the Standard and Midi charms include two lines of engraving with 10 characters and spaces.
- An optional third line may be purchased.

STONES

One or two genuine or Swarovski Zirconia gemstones may be added to the bail.



CLASSIC GRAND (LARGE) CHARM
3/4" W x 1" L

Grand Charms expand upon the elegant simplicity of the collection in a larger size with increased engraving capacity.



SPECIALTY GRAND & OVERLAY CHARMS
3/4" W x 1" L

You can also personalize your Grand Charm with a symbol layered over a full fingerprint or create a unique two-print or yin yang piece. Color can be added to the overlay symbols for an additional fee.

Examples:



ENGRAVING

- Grand Charms include three lines of engraving with up to 12 characters and spaces per line.
- An optional fourth line may be purchased.

STONES

One or two genuine or Swarovski Zirconia gemstones may be added to the bail.



SINGLE HEARTFELT CHARM
5/8" W x 11/16" L

Heartfelt emotions run deep. A simple touch of this charm will keep you close to the one you love.

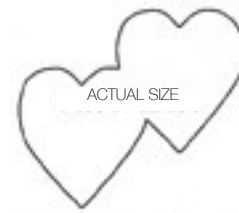


ENGRAVING

- Two lines of engraving with up to 10 characters and spaces per line are included.
- An optional third line may be purchased.

STONES

One or two genuine or Swarovski Zirconia gemstones may be added to the bail.



DOUBLE HEARTFELT CHARM
1" W x 1" L

Double Heartfelt Charms allow you to showcase two prints side by side on the same pendant—forever connected.

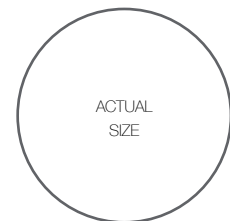


ENGRAVING—Choose between

- *Option 1:* One angled line of engraving with up to 18 characters and spaces - **OR** -
- *Option 2:* One, two, or three lines with up to 10 characters and spaces per line behind each heart

STONES

One or two genuine or Swarovski Zirconia gemstones may be added to the bail.



FAMILY TIES CHARM
1-1/8" Diameter

Show the world the dynamics in your family! Family Ties Charms are available in 3-, 4-, 5-, & 6-print configurations. Each segment can display a finger, foot or hand print. A name can also be used in lieu of a print on the 3-print version (additional fee applies). Pet prints will work too!



ENGRAVING—Choose between

- *Option 1:* Up to three letters engraved on the back behind each print - **OR** -
- *Option 2:* Up to three lines with 12 characters and spaces per line
- An optional fourth line may be purchased.

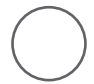
STONES

As many as three stones can be added: up to two in the bail and one center stone.

THUMBIES ORGANICS™

Thumbies Organics™ are named because of their free form. Each piece is individually crafted and pressed, leaving irregular edges. In three sizes, Organics offer a fresh way to celebrate family relationships, and can be worn individually, in multiples, or with other charms.



 **SMALL ORGANIC**
10 mm diameter

 **MEDIUM ORGANIC**
15 mm diameter

 **LARGE ORGANIC**
20 mm diameter

ENGRAVING

All sizes include a single line of block engraving with up to 3 characters.

PRINT

Multiple print styles available in Large and Medium sizes. The Small Charm is only available with a fingerprint.

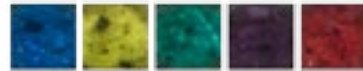
METALS

Available in .925 Sterling Silver, 14k Yellow Gold, and 14k White Gold

Approximate sizes shown above, as there will be slight variations from piece to piece due to the organic nature of these charms.

PHOENIX COLLECTION™

The Phoenix Collection™ of Cremation Keepsakes takes inspiration from the legend of the phoenix and its rise from ash. Cremated remains are preserved in a specially developed, protective resin and set securely into hand-finished pendants. The resin comes in five rich colors: blue, yellow, green, purple, and red. Resin color will vary based on the unique characteristics of cremated remains.



CROSS

Medium: 3/4" W x 1-3/8" L
Large: 1" W x 1-5/8" L

ENGRAVING

Up to two lines: line 1 can hold up to 3 characters and line two can hold up to 9 characters and spaces.

INFINITY HEART

Medium: 3/4" W x 15/16" L
Large: 15/16" W x 1-1/4" L

ENGRAVING

Includes up to four characters.

FAMILY TIES

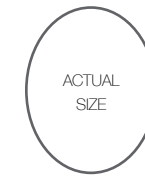
1-1/8" Diameter
3-, 4-, 5-, or 6-print

ENGRAVING

Choose between three characters behind each print - OR - three lines with up to 12 characters and spaces.

NOBLE BRONZE™

Our Noble Bronze™ collection includes a brushed satin finish with hypo-allergenic coating. All pendants include an adjustable, black neoprene cord with stainless steel slides. To keep your Noble Bronze keepsakes looking their best, please do not wear them in the water or swimming. Chlorine and salt can adversely affect the finish.



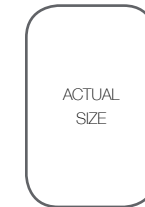
CLASSIC OVAL

11/16" W x 7/8" L

The Classic Oval is just the right size and features an opening for the included cord.

ENGRAVING

- Up to two lines of engraving with up to 10 characters and spaces
- An optional third line may be purchased.



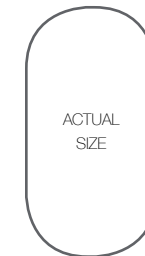
SINGLE RECTANGLE

11/16" W x 1-1/16" L

Our simple, Single Rectangle design frames your print perfectly.

ENGRAVING

- Up to two lines of engraving with up to 10 characters and spaces
- An optional third line may be purchased.



DOUBLE RECTANGLE

11/16" W x 1-5/16" L

An elongated rectangle design showcases two prints.

ENGRAVING

- Up to four lines of engraving, with two lines behind each print. Each line can contain up to 10 characters & spaces.
- Optional third line behind either or both of the prints is available for purchase.



OPEN HEART

3/4" W x 13/16" L

Fill your Open Heart Charm with the fingerprint of a loved one to hold near to you.

ENGRAVING:

- Includes two lines of engraving with up to 10 characters and spaces per line.
- A third line is not available.



Fingerprint only

Rings signify important traditions and relationships. Honor the people and pets who have left their mark on your heart with a Remembrance Band or Signet Ring. Cremation Bands are now available in Straight and Tapered designs. **ENGRAVING** for all rings includes one line with up to 20 characters and spaces. An additional 8 characters may be purchased.

SIGNET RINGS

Signet Rings hold your choice of print. Rimmed fingerprints are available with overlay symbols including a ribbon, cross, Star of David, or an initial. Available in half-size increments from 3.0 through 14.5. (Larger sizes will be quoted.)

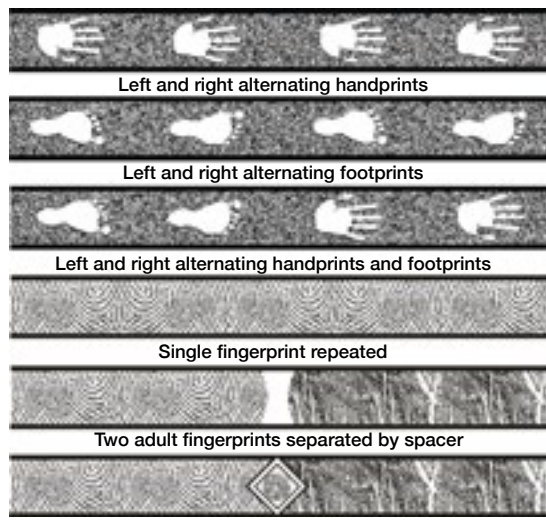


REMEMBRANCE BANDS

8 mm wide

Remembrance Bands can feature one or two fingerprints. Overlay prints (hand, foot, or pet) can be added. Band rings are available in half-size increments from 3.0 through 14.5. (Larger sizes will be quoted.) Common layouts are shown below. Two fingerprints can be separated by a stone (see page 17 for available stones).

REMEMBRANCE BAND CONFIGURATIONS



Buddies pet prints also available!

PHOENIX BAND RINGS

Straight: 7.8 mm wide

Tapered: 9.1 mm wide on top with a tapered bottom

Atop the fingerprint (or textured surface), is a protective resin containing the cremated remains. Resin is available in yellow, red, green, blue, and purple. Available in half-size increments from 3.0 through 14.5. (Larger sizes will be quoted.)



Straight Band

- OR -



Tapered Band

Straight Band With Texture

Tapered Band With Fingerprint

A woman's jewelry box holds layers of meaning. Beyond the obvious decorative value, her prize pieces reflect her deep connections to the special people in her life. Carry those connections with you always by wearing one of our pins, earrings, or charm bracelets.

HANGING CHARM PIN

Suspend your keepsake print from our Hanging Charm Pin, available with a Standard, Midi, Heartfelt, Grand, or Specialty Grand Charm. (See pages 3-4 for charm sizes)

ENGRAVING

Engraving is determined by charm size, noted above.

STONES

Gemstones may be added for an additional fee.



LAPEL PIN

For a classic look, we also offer the Lapel Pin—available in a Standard, Midi, Single Heartfelt, Grand, or Specialty Grand Charm. Posts with clutch receptors are laser attached to the backside of charm.

ENGRAVING

Engraving is determined by charm size, noted above. No additional lines of engraving are available.



EARRINGS

Standard or Heartfelt Charms hang freely from lever-back earrings. You can further adorn your earrings by adding genuine or synthetic gemstones.

ENGRAVING

Each earring includes the same amount of engraving as used on the Standard or Heartfelt Charms. A third line of engraving may be purchased for each.

STONES

You can further adorn your earrings by adding genuine or synthetic gemstones.



You can customize your earrings to include two different prints!

DOUBLE LINK CHARM BRACELET

Available in 7" and 8" lengths

Start an heirloom bracelet with charms of your loved ones. Bracelets are available in .925 Sterling Silver, 14k Yellow and White Gold. Charms and birthstones are purchased separately. If you would like Meadow Hill to attach the charms, there is a small fee.

ENGRAVING

Engraving is determined by charm size.

STONES

Special stone bails can be purchased and added to your bracelet, as pictured by the Heart.



The same hand-crafted elegance of Meadow Hill keepsakes can be found in our custom beads designed to work with most memory bracelets. Depending on the collection, various shapes and designs are available to create a truly one-of-a-kind charm. Choose your design and consider stone and engraving options.

All beads are crafted in solid .925 Sterling Silver. Synthetic birthstones are Swarovski Zirconia. Sterling Silver snake bracelets are available for purchase as well, in 7.5" and 8.5" lengths.

THUMB BEADS™

Available in 4 main styles

Cube

One fingerprint repeated on three panels with engraving and/or a stone on the 4th panel - OR- Two prints facing each other with engraving and/or stones on adjacent sides.



Hex

One print wrap with engraving (no stone option).



Round

One print wrap with engraving, or add a birthstone to your bead.

Engraving Only



With Stone



Two-Heart

Two heart-shaped prints with two patterned hearts - OR - two stones, plus two lines of engraving.



Patterned Hearts

Two Gemstones

PHOENIX CREMATION BEADS

Available in 4 main styles, each with a cremated remains resin well; available in 5 colors.

Cube

Includes one print repeated on 3 panels, with up to 4 characters of engraving and/or a stone on the fourth panel. Cremated remains are suspended in the waterproof resin on one of the fingerprint panels.

With stone



No stone



Round

One print wrap with up to 4 characters of engraving



BUDDIES BEADS

Available in 3 main styles

Cube

One print repeated on two panels with two sides of engraving. Up to two stones can be added (as shown below).



Nose-print shown with two stones added. Other prints available.

Round, One Print

One print, one animal icon, and up to 2 lines of engraving (4 characters max.)

Dog



Cat



Horse



Bird



Reptile



Round, Two Prints

Two prints, one animal icon, and up to 2 lines of engraving (4 characters max.)

Dog



Cat



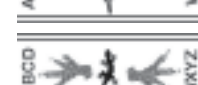
Horse



Bird



Reptile



BUDDIES CREMATION BEADS

Available in 4 main styles, each with a cremated remains resin well; available in 5 colors.

Cube

Includes one print repeated on 2 panels. Up to 4 characters of engraving and/or a stone can be included, with the fourth panel containing the cremated remains.

With stone



No stone



Round, One Print

One print, one animal icon, and 1 line of engraving (4 characters max).

Dog



Cat



Horse



Bird



Reptile



Round, Two Prints

Two prints and up to 2 lines of engraving (4 characters max).

Dog



Cat



Horse



Bird



Reptile



Snake Bracelets are available for purchase. (See page 15.)

Resin is available in 5 colors—blue, yellow, green, purple, and red. Colors will vary due to the unique characteristics of cremated remains.



Looking for a keepsake you can carry with you every day? Meadow Hill offers several non-jewelry keepsakes that can always stay close at hand.

KEY FOB *Please note, Key Fobs take approximately 8-10 weeks for delivery.*
1-1/2" in diameter

Stay connected to those you love with a keepsake you never leave home without. Embed a Standard, Midi, Single Heartfelt, or Grand charm in protective Lucite®.

ENGRAVING

- Standard, Midi, and Single Heartfelt charms come with two lines of engraving with up to 10 characters and spaces. A Grand Charm includes three lines of engraving with up to 10 characters and spaces.
- An additional line of engraving may be purchased.



BUCK® KNIFE
3-3/4" closed, 6-3/8" open

This classic tool unites a rugged stainless steel form with a unique keepsake as tribute to a loved one.

ENGRAVING

- Two lines of engraving with 10 characters and spaces on each line are included on the knife.
- An optional third line may be purchased.



CRKT® KNIFE
Small - 3" closed, 5-1/8" open
Large - 3-3/4" closed, 6-1/2" open

Our specialists customize Pazoda Knives from Columbia River Knife and Tool Company® with CerMark™—a special ceramic process. Prints and inscription are laser bonded to the knife.

INSCRIPTION

- Small—Includes two lines of engraving with up to 10 characters and spaces on each line
- Large—Includes two lines of engraving with up to 10 characters and spaces on each line; extended lines (up to 16 characters) may be purchased



ZIPPO® LIGHTER
1-1/2" W x 2-1/4" L

The Stainless Steel Zippo® Lighter lends a metaphor for love, with its reliable flame, to the Standard Thumbies or Buddies Charm, which are mounted directly onto the lighter.

ENGRAVING

- Two lines of engraving with up to 10 characters and spaces on each line are included. Engraving is placed on the lighter.
- An optional third line may be purchased.



Our Menswear keepsakes are both stylish and practical. They become priceless by adding prints of the people and pets you love dearly.

TIE TACS & LAPEL PINS

Neat as a pin—that's how you will look with a Tic Tac or Lapel Pin made from a Standard, Midi, Single Heartfelt or Grand charm. Posts with clutch receptors are laser attached to the backsides.

ENGRAVING

- Standard, Midi, and Single Heartfelt charms come with two lines of engraving with up to 10 characters and spaces. Grand Charms include three lines of engraving with 10 characters and spaces.
- No additional lines are available.



CUFF LINKS

Swivel posts are laser attached to the backsides of Standard, Midi, or Single Heartfelt Charms, allowing you to literally wear your heart on your sleeve.

ENGRAVING

Cuff link engraving is placed on the wings of the links as shown. Each link provides two areas (one on each side of the center stem) for up to 10 characters and spaces.



MONEY CLIP
7/8" W x 2-1/4" L

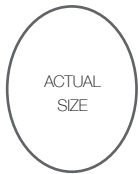
Money Clips feature Standard Charms and engraving so that the love we forge into metal can be kept in the pocket at all times.

ENGRAVING

- Two lines of engraving with 10 characters and spaces on each line are included. Engraving is placed on the Money Clip.
- An optional third line may be purchased.



Crafted in a proprietary formula of white bronze, Meadow Hill's **Noble Bronze™** keepsakes are affordable and unique. They are also a great solution for those with metal allergies as the brushed satin finish is coated with a hypo-allergenic coating. All pendants include an adjustable, black neoprene cord with stainless steel slides, and the KeyTag™ comes complete with a black rubber silencer, a 30" Stainless Steel ball chain, and a split ring for holding keys.



CLASSIC OVAL
1 1/16" W x 7/8" L

The Classic Oval is just the right size, and features an opening for the included cord.

ENGRAVING

- Up to two lines of engraving with up to 10 characters and spaces.
- An optional third line may be purchased.



SINGLE RECTANGLE
1 1/16" W x 1-1/16" L

Our simple, Single Rectangle design frames your print perfectly.

ENGRAVING

- Up to two lines of engraving with up to 10 characters and spaces.
- An optional third line may be purchased.



DOUBLE RECTANGLE
1 1/16" W x 1-5/16" L

An elongated rectangle design showcases two prints.

ENGRAVING

- Up to four lines of engraving, with two lines behind each print. Each line can contain up to 10 characters & spaces.
- Optional third line behind either or both of the prints available for purchase.



OPEN HEART
3/4" W x 13/16" L

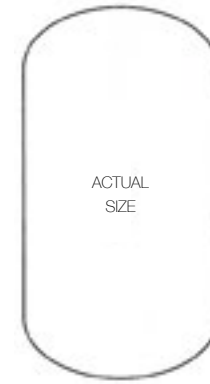
Fill your Open Heart Charm with the fingerprint of a loved one to hold near to you.

ENGRAVING:

- Includes two lines of engraving with up to 10 characters and spaces per line.
- A third line is not available.



Fingerprint only



KEYTAG™ CHARM
1" W x 1-15/16" L

The KeyTag is styled after a traditional dog tag. It can be worn as a pendant or carried as a key chain. Prints are proportionately sized for each of the three styles described below.

STYLE 1

Style 1 includes a single, large print centered on the tag with two lines of engraving with up to 10 characters and spaces. Engraving is positioned horizontally on the backside of the tag. Third lines of engraving and extended lines are available for additional fees.



Shown with an additional line and extended engraving on line 2



STYLE 3

Style 3 is a two-print version with 4 lines of engraving on the backside—2 behind each print. The standard lines include up to 10 characters and spaces. An optional 3rd line may be purchased behind each of the prints.

STYLE 2

Style 2 includes a single small print with up to two lines of engraving placed below the print. Each line of engraving comes with up to 10 characters and spaces. For additional fees, you may add a 3rd line on the front, or as many as three additional lines on the back, positioned lengthwise.



Style 3

The **Phoenix Collection™** of Cremation Keepsakes takes inspiration from the legend of the phoenix and its rise from ash to pay the greatest tribute to a loved one. Our artisans—all of whom have undergone bereavement training—handle your loved one's cremated remains with great respect. They preserve a small amount of ash in a specially developed, protective resin and set it securely into a hand-finished pendant, bead or ring. The resin comes in five rich colors: yellow, red, green, blue, and purple. Keepsakes are further customized with engraving, and select pieces include fingerprints of your loved ones, cast just like our Thumbies keepsakes.



AVAILABLE IN GOLD! CHECK ONLINE FOR IMAGES AND CURRENT PRICING.

CROSS

Medium: 3/4" W x 1 3/8" L
Large: 1" W x 1 5/8" L

This timeless symbol in a satin finish renders your loved one's cremated remains secure in a durable resin.

ENGRAVING

Up to two lines: line 1 can hold up to 3 characters and line two can hold up to 9 characters and spaces.



INFINITY HEART

Medium: 15/16" W x 1 1/4" L
Large: 3/4" W x 15/16" L

Several hearts are entwined to form the Infinity Heart Charm, a symbol of eternal love. Infinity Hearts feature a satin finish.

ENGRAVING

Up to four characters.



FAMILY TIES

1-1/8" Diameter
3-, 4-, 5-, or 6-print

Similar to our classic charm, Phoenix Family Ties Charms are slightly domed. The center resin is inset in the middle of this high polish pendant. (If a print other than a fingerprint is used, the charm will have a satin finish.)

ENGRAVING

Choose between three characters behind each prints - **OR** - three lines with up to 12 characters and spaces. An additional fourth line is available for purchase.



PHOENIX & BUDDIES CREMATION BEADS

Available in 4 main styles with a cremated remains resin well; available in 5 colors.

Cube

Includes one print repeated on 3 panels, with engraving and/or a stone on the fourth panel. Cremated remains are suspended in the water-proof resin on one of the fingerprint panels. Buddies Beads include one print repeated on 2 panels as shown below. Up to 4 characters on engraving are included.

With stone



No stone



Buddies w/ stone



Buddies no stone



Round

One print wrap with up to 4 characters of engraving. Buddies Beads also include one animal icon.

Finger



Dog



Cat



Horse



Bird



Reptile



Round, Two Prints

Two prints and up to 2 lines of engraving (4 characters max.)

Dog



Cat



Horse



Bird



Reptile

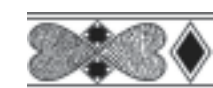


Large Hearts

Two heart-shaped prints with the option of two patterned hearts - **OR** - two stones. No engraving.



Patterned Hearts



Two Birthstones

Small Hearts

Two heart-shaped prints with the option of two patterned hearts - **OR** - two stones, plus two lines of engraving of 4 characters per line.



Patterned Hearts



Two Birthstones

PHOENIX BAND RINGS

Straight: 7.8 mm wide
Tapered: 9.1 mm wide on top with a tapered bottom

Atop the fingerprint (or textured surface), is a protective resin containing the cremated remains. Resin is available in yellow, red, green, blue, and purple. Available in half-size increments starting at 3.0 through 14.5. (Larger sizes will be quoted.) Engraving includes one line with up to 20 characters and spaces. An additional 8 characters may be purchased.



Straight Band

- **OR** -



Tapered Band



Straight Band With Texture



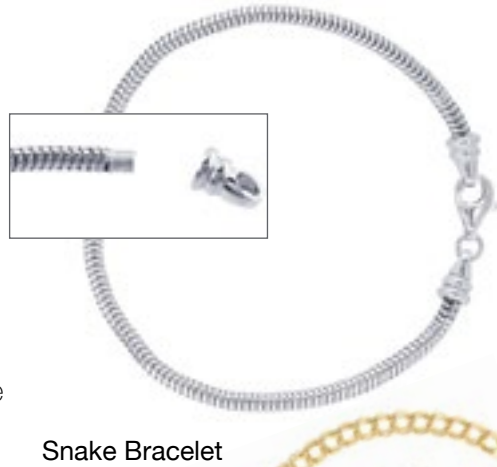
Tapered Band With Fingerprint

Resin is available in 5 colors - blue, yellow, green, purple, and red. Colors will vary due to the unique characteristics of cremated remains.



BRACELETS

Meadow Hill offers two bracelet styles. Our **Sterling Silver Snake Bracelet** is available in 7.5" and 8.5" lengths. The end unscrews so that beads can easily be added.



Snake Bracelet

For a charm bracelet, we recommend our Double Link Charm Bracelet, which comes in 7" and 8" lengths in all three metals.



Double Link

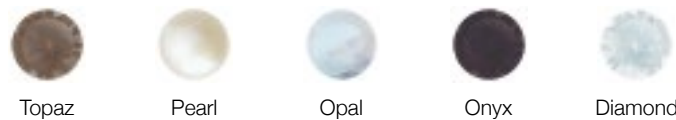
GEMSTONES

Meadow Hill offers both synthetic and genuine gemstones for many of our keepsakes—in a bail, set on the jewelry itself, or as a stone charm. Our synthetic gemstones are Swarovski Zirconia® and are all priced equally. Genuine stones vary in price. Check with your service provider or call Customer Service at 877.848.6243 for pricing.

SWAROVSKI ZIRCONIA OR GENUINE BIRTHSTONES

 January Garnet	 July Ruby
 February Amethyst	 August Peridot
 March Aquamarine	 September Sapphire
 April CZ/Diamond	 October Pink Tourmaline
 May Emerald	 November Citrine
 June Alexandrite	 December Blue Zircon

GENUINE STONES



Colors shown are representative. Stone colors may not match due to lighting, printing, and the natural variations in synthetic and genuine stones.

CHAINS & CORDS

Chains and cords are sold separately (with the exception of our Noble Bronze Collection). Box chains are available in Sterling Silver, and Anchor chains are offered in Yellow or White Gold. Chains are available in 18", 20", 24" and 30" lengths.

Cords come in several colors (shown below) in 18" lengths. You may also purchase an adjustable black Neoprene cord (18"-27").

14k Anchor Chains in Yellow or White Gold



Sterling Silver Box Chain



Leather cords come in black, pink, or brown with gold-plated or sterling silver closures.



Adjustable black Neoprene with stainless steel sliders.

WOODEN URNS FROM DAVIS WHITEHALL®

Meadow Hill embeds a Standard Thumbies or Buddies Charm into beautiful hardwood keepsake urns crafted in Colorado Springs by Davis Whitehall Company®. Hide a special note, a lock of hair, or other small memento inside the cavity accessed on the backside of the Heartfelt, Pawprint, or Bone Keepsake Urn.

U.S. Patent No. D622,024



Cherry

HEARTFELT KEEPSAKE URN
2-13/16" D x 2-7/8" W x 1-3/4" H

Choose from maple, cherry, or walnut finish. Two lines of engraving are included: line 1 holds up to 12 characters and spaces; line 2 holds up to 18.

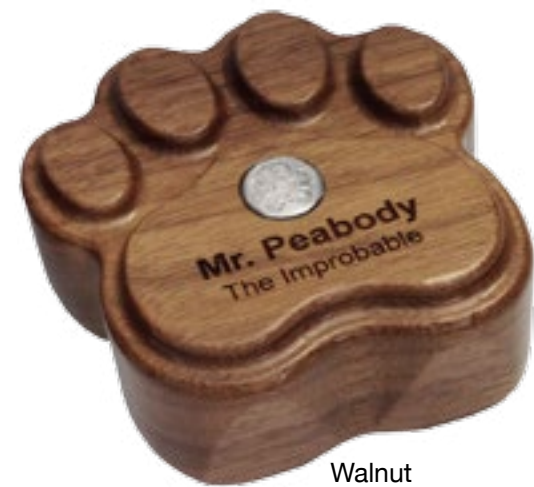


Maple



Walnut

U.S. Patent No. D634,245



Walnut

PAWPRINT KEEPSAKE URN
3-1/2" D x 3-1/2" W x 1-9/16" H

Choose from maple, cherry, or walnut finish. Two lines of engraving are included: line 1 holds up to 12 characters and spaces; line 2 holds 18.



Maple



Cherry

U.S. Patent No. D632, 455



Maple only

BONE KEEPSAKE URN
2" D x 5-3/8" W x 1-3/8" H

Available only in Maple. Two lines of engraving are included: line 1 holds up to 12 characters and spaces; line 2 holds 18.

CUSTOM ENGRAVING AND DESIGNS

Throughout this Product Catalog, our standard engraving parameters for each keepsake are listed, available in **BLOCK** and *Script* styles to fit your preference. Product size variations dictate the amount of engraving, but when possible we will work with you to fit your desired message on each keepsake (additional fees will apply).

Did you know you can take it one step further and do custom engraving as well? Perhaps you want to hold on to the signature of your loved one forever. Maybe there is a symbol or icon that holds special meaning. Send it to us or choose from one of our available symbols, which include hearts, clovers, stars, infinity symbols to name just a few (contact us to receive the list). We have engraved signatures to line drawings and just about everything in between. (You may place an order online using the Custom engraving option, but we will need to review all uploads before finalizing your order.)

Let's not stop there though. Meadow Hill has been known for years—more than 18 to be exact—to specialize in custom design. We love working on new ideas and we have been amazed by the ideas our customers have sent us!

Not only do we have a friendly and helpful Customer Service team on hand to help, but we also have designers who would love to help bring your idea to life! **Email your idea to info@meadowhillco.com or call our team toll free at 877.848.6243.** We'd love to hear from you!

The living owe it to those who no longer can speak to tell their story for them.

-Czesław Miłosz-



Custom engraving example



Custom Thumbies cremation charm with custom engraving



Custom Remembrance Bands



Wedding ring band transformed into Thumbies Charm with custom engraving

IT STARTS WITH A PRINT

The greater the quality and the higher the contrast in the print supplied, the more detail Meadow Hill will be able to achieve in the finished keepsake. You may capture and provide prints in the following formats:

- **Digital Photographs** - Best for capturing pet prints—a close-up, clear image with no flash works best.
- **Ink Prints** - Contact your sales representative to get a supply of ink strips and print cards, if needed.
- **Session IDs** - For the easiest and cleanest way to collect prints, reference the Funeral Home Session ID from prints scanned and secured in our Print Vault.

How To ORDER

Now it's time to order. You can submit orders in one of three ways:

1. Visit www.meadowhillco.com to place your order. To complete your order online, you will either need the Funeral Home Session ID, or a clear image or scan of your print(s) to upload.
2. **Mail or fax in the order form** on the following page. Prints may be sent with the order form or reference your Session ID.
3. **Connect with us!** Our team is on hand to help. You may email us at info@meadowhillco.com or call us toll free at 877.848.6243 (847.381.9000 if outside the U.S.). Our phone lines are open Monday-Friday, 7:30 a.m. to 4:30 p.m. CST.

TAKING A GREAT PRINT

As mentioned, prints can be taken using our scanner (recommended) or by using ink strips. The quality of the finished keepsake is directly related to the quality of the print taken. Some prints are easier than others to obtain, but use the following tips to get the best ink prints.



1) REVIEW THE AREA Each fingerprint carries unique whorls, swirls, and arches. Locate the most interesting area to be inked or scanned.



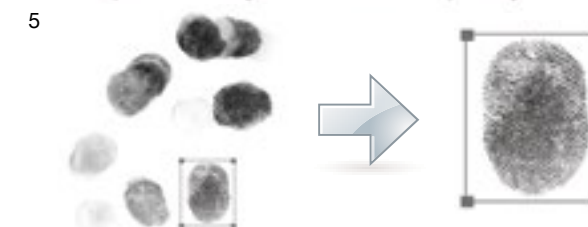
2) INK THE PRINT Place an ink strip on a firm surface. Tap the finger on the ink strip a few times, making sure the fingerprint is evenly covered with sufficient ink.



3) COLLECT THE PRINT Place the print collection card on a firm surface. Tap the finger on the card using firm but not hard pressure. Move the card and continue printing until you have a good print. **Never use lined paper and do not roll the finger.**



4) EXAMINE PRINTS Take a look at the samples of UNUSABLE prints below. This is what you want to avoid. Each print has a problem that will reduce the quality of the keepsake. If you don't see print details and lines, then we won't either!



5) SCAN PRINT(S) To send prints electronically, you may use your desktop scanner to scan them as a **Grayscale image** (NOT black and white) at **600 dpi**. Save the file as a **JPG or BMP format**. DO NOT resize. Using the crop tool, frame your selected print. For best results, be sure the image is orientated correctly (tip of the finger to the top of the image). Save the file to your device and send/upload to Meadow Hill with your order.

ORDER FORM IS ON THE NEXT PAGE ⇒



SEND TO PO Box 1948 • Woodstock, IL 60098
 FAX TO 847.381.1735 or EMAIL info@meadowhillco.com

Phone: 847.381.9000 • Toll-Free: 877.848.6243
 Website: www.meadowhillco.com

Current metal prices available online on your directors account.
 SILVER PRICE _____ GOLD PRICE _____

FULL NAME OF PRINTEE: _____

- REORDER (Once used, prints are kept on file.)
- PRINTS EMAILED
- VAULT SESSION ID _____

BUSINESS PARTNER ADDRESS

Business Name _____ Acct # _____
 Contact Name _____
 Street Address _____
 City, State, Zip _____
 Phone _____ Fax _____
 Business e-mail address _____

THIRD PARTY ADDRESS Finished orders are shipped directly to our Business Partners unless you direct them to a third party.

Third Party Recipient _____
 Street Address _____
 City, State, Zip _____
 Special Instructions: _____

All options listed on this form are not applicable to all keepsakes. Please check product details to confirm options and availability.

QUANTITY	KEEPSAKE	FINISH	PRINT TYPE	BAIL	CHAIN CORD, BRACELET	METAL/COLOR	STONE 1	STONE 2	RING SIZE (M-F)	RESIN COLOR (F, Y, G, B, P)	ENGRAVING (each one)	ENGRAVING LINES (Double check brochure or website for allowable options.)			
												Line 1	Line 2	Line 3	Line 4
											SCRIPT BLOCK				
											SCRIPT BLOCK				
											SCRIPT BLOCK				

Metal Allergies: If you purchase our .925 Sterling Silver, there is a small chance of an allergic reaction due to the nickel content within the metal. If you have known allergies, we recommend that your charm be plated with Palladium to prevent the reaction and to eliminate tarnishing.

CLASSIC CHARMS

- Standard _____ SD
- Midi _____ MD
- Grand _____ GR
- Grand Overlay Cross _____ GR-CRS
- Grand Overlay Star of David _____ GR-SOD
- Grand Overlay Ribbon _____ GR-RIB
- Single Heartfelt _____ SH
- Double Heartfelt _____ DH
- Family Ties 3 Prints _____ FT-3
- Family Ties 4 Prints _____ FT-4
- Family Ties 5 Prints _____ FT-5
- Family Ties 6 Prints _____ FT-6

ORGANICS CHARMS

- Small Organic _____ ORS
- Medium Organic _____ ORM
- Large Organic _____ ORL

NOBLE BRONZE

- KeyTag Style 1 _____ KT-1
- KeyTag Style 2 _____ KT-2
- KeyTag Style 3 _____ KT-3
- Noble Bronze Oval _____ NBO
- Noble Bronze Open Heart _____ NBH
- Noble Bronze Rectangle _____ NBR
- NB Double Rectangle _____ NBD

PHOENIX COLLECTION

- Phoenix Cross, Medium _____ PCM
- Phoenix Cross, Large _____ PCL
- Infinity Heart, Medium _____ PHM
- Infinity Heart, Large _____ PHL
- Phoenix Family Ties, 3 _____ PFT3
- Phoenix Family Ties, 4 _____ PFT4
- Phoenix Family Ties, 5 _____ PFT5
- Phoenix Family Ties, 6 _____ PFT6

RINGS

- Signet Ring _____ SR
- Remembrance Band _____ RB
- Phoenix Straight Band with Texture _____ PRB-TX
- Phoenix Straight Band with Fingerprint _____ PRB-FF
- Phoenix Tapered Band with Texture _____ PTR-TX
- Phoenix Tapered Band with Fingerprint _____ PTR-FF

PINS, TIE TAC, & KEY FOB

- Note charm: Standard (SD), Midi (MD), Grand (GR) or Heartfelt (SH)
- Hanging Pin _____ HP-[charm]
 - Lapel Pin _____ LP-[charm]
 - Tie Tac _____ TT-[charm]
 - Key Fob _____ KF-[charm]

EARRINGS

- Standard _____ LBS-1/2 & LBS-2/2
- Heartfelt _____ LBH-1/2 & LBH-2/2

MENSWEAR & ACCESSORIES

- Note charm: Standard (SD), Midi (MD), or Heartfelt (SH)
- Cuff Links 1/2 _____ CL-1/2 [charm]
 - Cuff Links 2/2 _____ CL-2/2 [charm]
- Standard only (SD):
- Money Clip _____ MC
 - Zippo Lighter _____ LT
 - Buck Pocket Knife _____ PK

- CRKT Knife, Small _____ CK-S
- CRKT Knife, Large _____ CK-L

WOODEN KEEPSAKE URNS

- Heart Urn _____ HKU
- Paw Urn _____ PKU
- Bone Urn _____ BKU

BEADS (*Notes a stone/stones can be added)

- Thumbbead Cube, 1 Print _____ TB-C1*
- Thumbbead Cube, 2 Print _____ TB-C2*
- Thumbbead Hex _____ TB-H
- Thumbbead Round _____ TB-R*
- Thumbbead Round, 2 Heart _____ TB-RH*
- Buddies Bead Cube _____ BB-C1*
- Buddies Round, 1 Print _____ BB-R1
- Buddies Round, 2 Prints _____ BB-R2
- Phoenix Bead Cube _____ PB-C1*
- Phoenix Bead Round _____ PB-R
- Phoenix Bead 1g Heart _____ PB-RLH*
- Phoenix Bead 5m Heart _____ PB-RSH*
- Buddies Cremation Cube _____ BC-C*
- Buddies Cremation Round One Print/Icon _____ BC-R1
- Buddies Cremation Round Two Print/Icon _____ BC-R2

BRACELETS, CHAINS, ETC

- 7" Charm Bracelet _____ BR-7
- 8" Charm Bracelet _____ BR-8
- 18" Chain _____ CHN-18
- 20" Chain _____ CHN-20
- 24" Chain _____ CHN-24
- 30" Chain _____ CHN-30
- 18" Black Cord _____ CRD-BLK
- 18" Brown Cord _____ CRD-BRN
- 18" Pink Cord _____ CRD-PNK
- Neoprene Cord _____ CRD-NEO

STONES Swarovski Zirconia

- January-Garnet _____ 01
- February-Amethyst _____ 02
- March-Aquamarine _____ 03
- April-Diamond _____ 04
- May-Emerald _____ 05
- June-Alexandrite _____ 06
- GENUINE ONLY
- Pearl _____ 13
- Opal _____ 14

METALS & FINISHES

- Sterling Silver _____ SS
- Yellow Gold _____ YG
- White Gold _____ WG
- Noble Bronze _____ NB
- Cherry Wood _____ CHR
- Maple Wood _____ MAP
- Walnut Wood _____ WAL

PRINT TYPE

- Full Fingerprint _____ FF
- Rimmed Print _____ RP
- Footprint _____ FP
- Handprint _____ HP
- Paw Print _____ PP
- Nose Print _____ NP
- Other _____ OP
- 2 Prints Yin Yang _____ YY
- 2 Feet, Side by Side _____ TF
- 2 Feet, Nestled _____ NF

BAILS

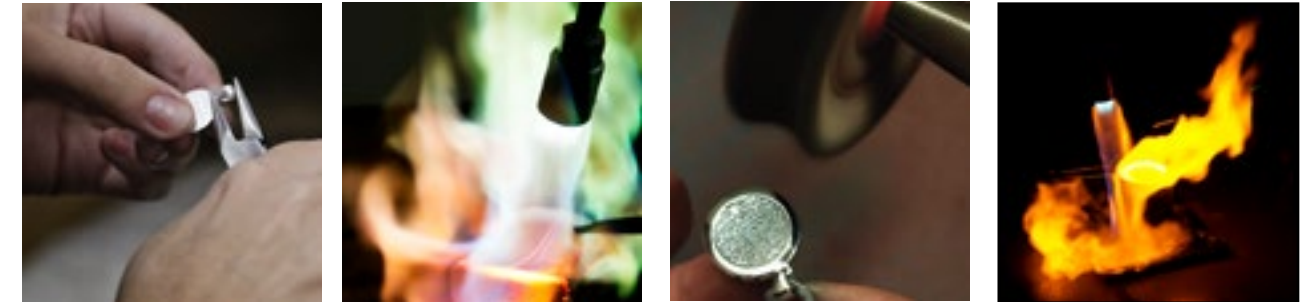
- Standard Bail _____ BSD
- One-Stone Bail _____ BOS
- Two-Stone Bail _____ BTS
- Jump Ring _____ BJR
- Touchstone (no bail) _____ BNA

GENUINE ONLY

- July-Ruby _____ 07
- August-Peridot _____ 08
- September-Sapphire _____ 09
- October-Pink Tourmaline _____ 10
- November-Citrine _____ 11
- December-Blue Zircon _____ 12
- Onyx _____ 15
- Topaz _____ 16

WHAT MATTERS MOST

Our team wants you to be fully satisfied with our products. This commitment includes workmanship, metals, engraving, and our customer service. If you would like to see additional product configurations beyond those shown in this catalog, please visit our website at www.meadowhillco.com. Should you have any questions or if you would like to discuss a custom order, our Customer Service Representatives can be reached on our toll free line, 877.848.6243, or at 847.381.9000 if you are outside of the U.S. Our business hours are Monday through Friday, 7:30 a.m. to 4:30 p.m. CST. We can also be reached by email at info@meadowhillco.com.



OUR GUARANTEE

Meadow Hill warrants its products to be free from defects in materials and workmanship for a period of one year. Repairs not covered in this warranty include stone loss due to prong damage, discoloration due to environmental factors, discolorations due to an allergic reaction, and damage due to wear, customer neglect, or abuse. Outside of the first year, repairs to damaged or worn pieces will be quoted based on standard jewelry repair costs.

CARE FOR YOUR JEWELRY

If sterling silver jewelry is worn daily, the natural oils in the body generally keep it lustrous for long periods. However, over time or if not worn regularly, a piece can dull or tarnish. Cleaning restores it to its original shine!

If your piece is tarnished, first try cleaning with a jewelry cloth. Often times, simply polishing the keepsake will return it to its original shine. If heavily tarnished, remove the tarnish with a liquid tarnish remover following the manufacturer's instruction. It only takes a second or two. Never submerge jewelry with stones (synthetic or genuine) or resin in tarnish remover or leave jewelry in the liquid for longer than a few seconds. Use a good silver cream polish to restore the shine and place a protective coating (and tarnish resistor) on your piece. These are available in most hardware and grocery stores. Again, follow the manufacturer's instructions.

If you would like to have your keepsake plated so as to eliminate the tarnish and the possibility of an allergic reaction, be sure to request this upon ordering. If your piece has already been purchased, you may return the charm and plating can be done for a minimal charge (plus shipping).

METAL ALLERGIES

Most people have no problem wearing sterling silver. However, a small percentage of the population has metal allergies and reacts to the alloys used in sterling silver. When worn, their pieces quickly tarnish, turn colors, and in severe cases, cause a skin reaction. If this happens, Meadow Hill can plate any sterling silver piece to make it hypo-allergenic.

WHY KEEPSAKES?

What would the ideal tribute to a family member offer? It would be durable and withstand the test of time. It would be elegant and well-designed. It would also be meaningful, personal, and evoke stories of the people, pets, and passions we love.

Our story

WHY MEADOW HILL?

Emotions matter. We have come to know people who wear our keepsakes and their need for a tangible connection with those they love. This understanding translates into a passion for craftsmanship and quality in every keepsake Meadow Hill makes. And since craftsmanship and quality still matter, we continue to cast our pieces from scratch, using raw grain metals, custom molds, thermal precision, vacuum sealed machinery, and hand-finishing in our own facility in Woodstock, Illinois. We aim for emotional resonance by producing keepsakes the right way, relying on our own process, inventions, and artisanal talent. We aim to support our funeral home partners and their families. We aim to be a link, connecting people at all ages and stages of life's circle.

Our brands

WHAT DO WE OFFER?



STAY CONNECTED.

110 1/4 Benton Street, Woodstock, IL 60098
www.meadowhillco.com · info@meadowhillco.com
877.848.6243 (847.381.9000 outside the U.S.)
Business hours are Mon-Fri, 7:30 am to 4:30 pm CST